

Pentera Cloud

Automated Cloud Penetration Testing

Test and validate your cloud defenses to ensure continuous cyber readiness with Pentera Cloud. Identify exploitable misconfigurations, software vulnerabilities, exposed credentials, and excessive permissions across your cloud estate to guide remediation efforts based on true exposure.

Key Product Pillars



Cloud Attack Surface Visibility

Requiring no agents, Pentera continuously maps your cloud assets, identifying workloads, storage, databases and identities across all regions.



Cloud-Native Attack Testing

Pentera safely runs ethical penetration testing attacks, validating your resilience against MITRE ATT&CK cloud techniques.



Cloud to On-Premises Testing

Just like an adversary, Pentera uncovers lateral attack paths between hybrid, on-premises and cloud environments.

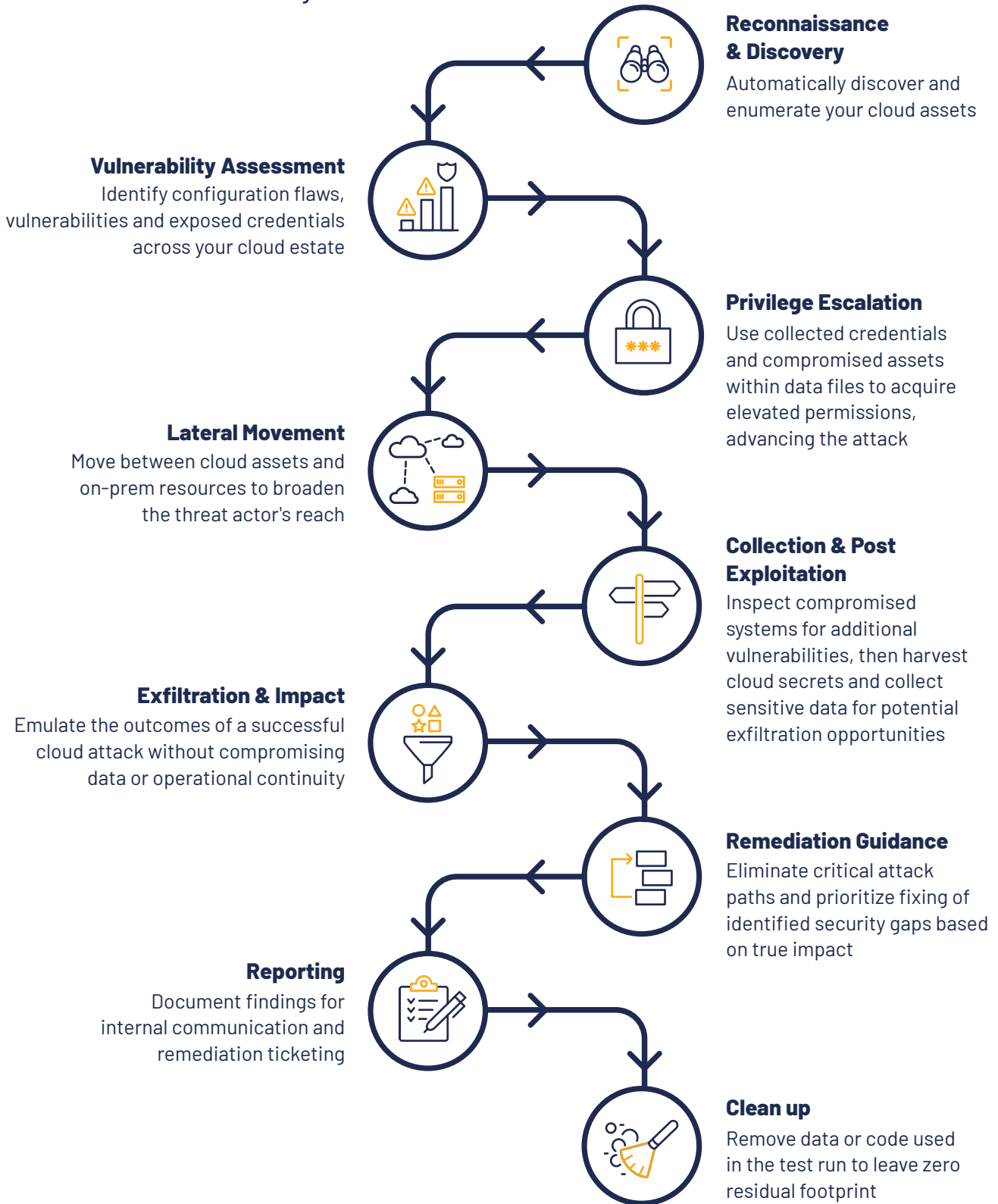


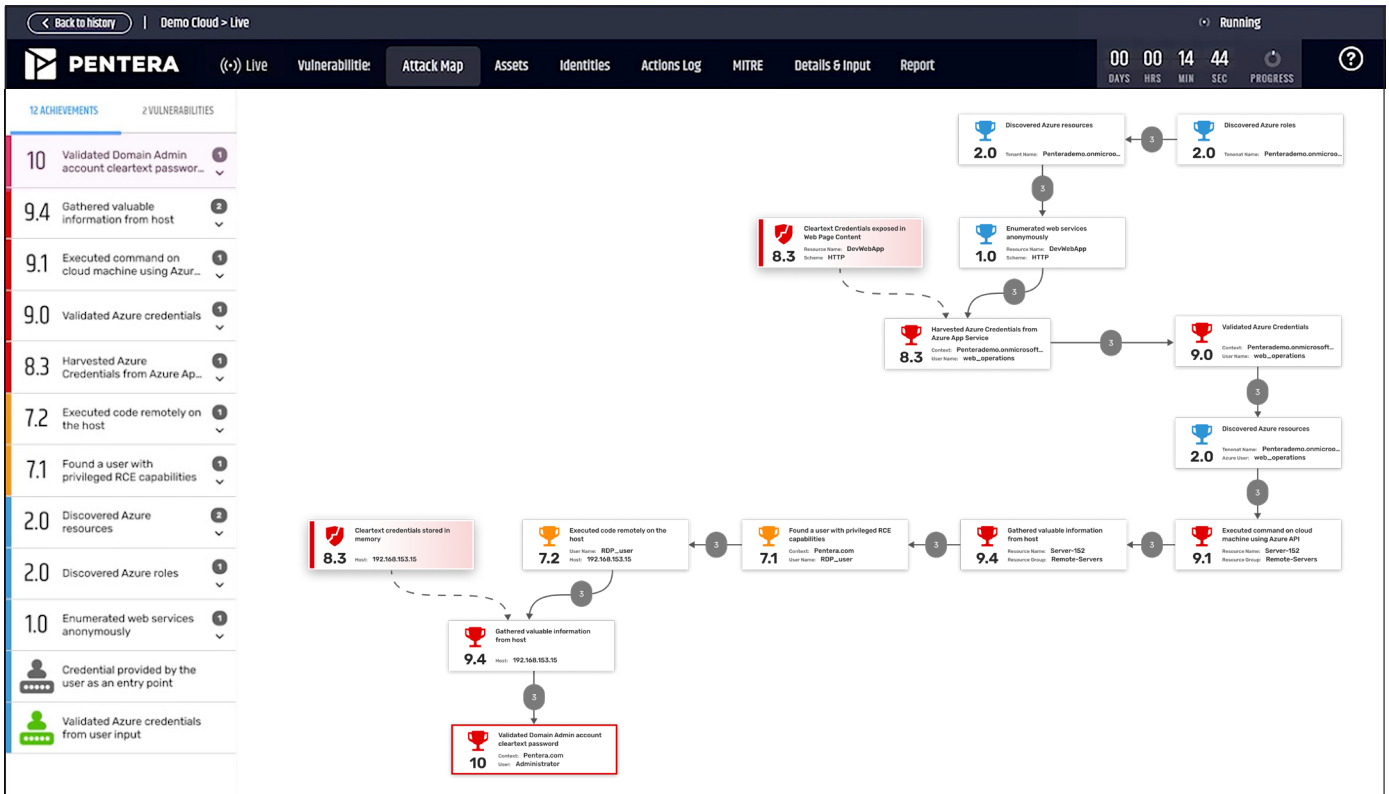
Evidence-Based Remediation

Exploitable security gaps are prioritized based on business impact, with detailed remediation guidance.

Automating the **Cloud-Native Attack** Testing Lifecycle

Pentera safely performs all the actions an adversary would





Benefits

- +
Reduce cyber risk exposure
 Identify and block exploitable attack kill-chains in your cloud environment.
- +
Increase cybersecurity team efficiency
 Automate security validation testing activities across the entire attack surface.
- +
Reduce third-party testing reliance and expenses
 Minimize cost and dependence on external cloud penetration testing services.
- +
Accelerate time-to-remediation
 Address critical cloud vulnerabilities and misconfigurations, mitigating risk before it materializes.

About Pentera

Pentera is the category leader for Automated Security Validation™, allowing every organization to test with ease the integrity of all cybersecurity layers, unfolding true, current security exposures at any moment, at any scale. Thousands of security professionals and service providers around the world use Pentera to guide remediation and close security gaps before they are exploited.